

# YANTAI SHENGHONG TRADING CO., LTD

Add: 23 South Beijing Road, Yantai Development Zone, Shandong Province, China

Email:shle@ytshtesting.com

WhatsApp/Wechat:+86 1395457173



## Company profile

- SHLE was founded in 2008. An ISO 9001 certificated company, it is a comprehensive R & D and manufacturing factory dealing with some domestic military equipment.
- Invented and manufactured China's first 48-ton diesel forklift truck (the largest in the country) and 20-ton side forklift truck (the largest in the country)
- Our factory can provide OEM service, Customizable colors, Customizable Logo

## Driver assistance system



When lowering the loading system, the telescopic arm is automatically retracted. Thus, the load is always guided as close to the vehicle as possible and critical situations do not occur even with maximum payloads.



When lifting and lowering the loading system, the attachment is moved up and down in a vertical line, i.e. the telescopic arm automatically extends and retracts and the load is moved up or down in a straight line. Thus, the load always remains in the safe area and stacking at high heights is simplified.



In manual mode, the machine does not perform automatic movements of the loading system. The overload protection is of course still active and stops the charging system as soon as the overload limit is reached



With the ergonomic joystick you have the whole machine under control. With up to 17-function functions, the most important tasks can be done without letting go of the joystick or grabbing it.

## Technical highlights



The Telescopic forklift has a modern operating concept with a large 7-inch LCD display. The design of the display is simple and intuitive. All important vehicle data and functions are displayed in the main menu. The Brightness can be adjusted and individually adapted to your needs. The optional rear view camera allows for improved rear view.



The cabin is equipped with a so-called jog dial. This allows all important machine settings, such as the oil quantity of all control circuits, to be conveniently adjusted. The most important operating data can be displayed and adjusted according to the requirements of the driver with the rotary and push wheel.



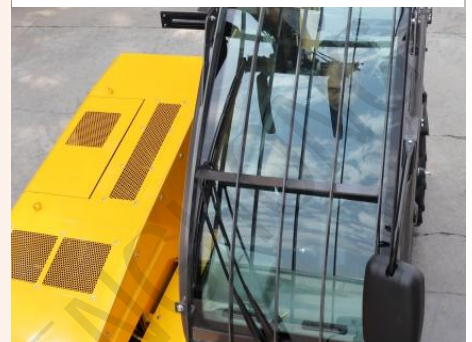
Via the display and the jog dial, the speed of the working hydraulics for lifting and lowering the lifting arm as well as tilting in and out of the Attachments can be adjusted in Three stages. The driver can therefore always choose the right measure between speed and precision.



With the ergonomic joystick you have the whole machine under control. With up to 17-functions on The joystick, you have the most Important machine functions at your fingertips.



All switches and buttons of the machine are color-coded so that the driver can find the desired function faster. The buttons with a safety function are red, the ones for the Hydraulics are green, for the electrics grey and for the drive blue. In order to always be able to use the directional switch even in the dark, all operating elements light up.



Everything in view at all times: All Telescopic forklift have a continuous windscreen, without disturbing cross struts. The disc has been pulled up and down as far as possible so that the operator can see the locking bolts immediately when changing Attachment sandal so has the attachment in view at maximum stack height.

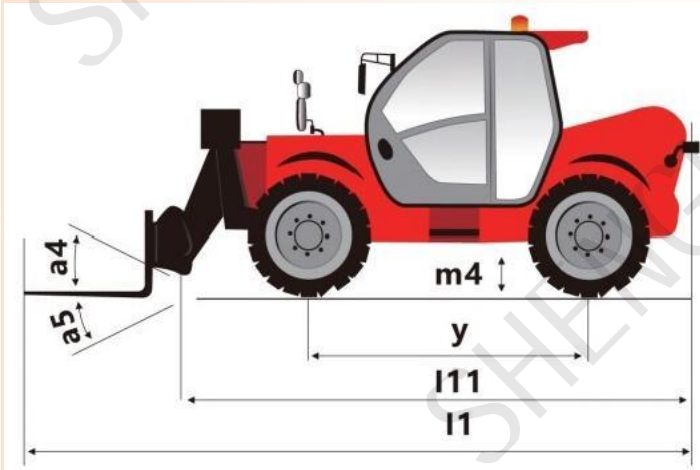
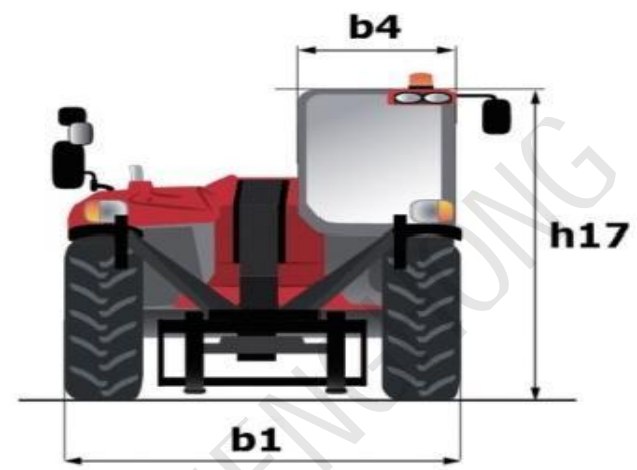
## Product specification

Max.capacity		5000 kg
Max.lifting height		9.8m
Max.outreach		4.5m
Overall length to carriage	l11	6.4m
Length to face of forks	l1	7.62m
Overall width	b1	2.4m
Overall height	h17	2.55 m
Wheelbase	y	3.15 m
Ground clearance	m4	0.35 m
Overall cab width	b4	0.84m
Tilt-upangle	a4	12°
Tilt-down angle	a5	114°
External turning radius(overtyres)		4.25m
Overall weight		12800 kg
Tires type		Pneumatic
Standard tires		16/70-20
Forks length/width/section	l/e/s	1220 mm x 125 mm / 50 mm
Lifting	—	18s
Lowering		14.4s
Extension		17.9 s
Transmission type		Torque converter
Number of gears(forward /reverse)		40 km/h
Max.travel speed		Automatic air-cut brake
Fuel tank		95L

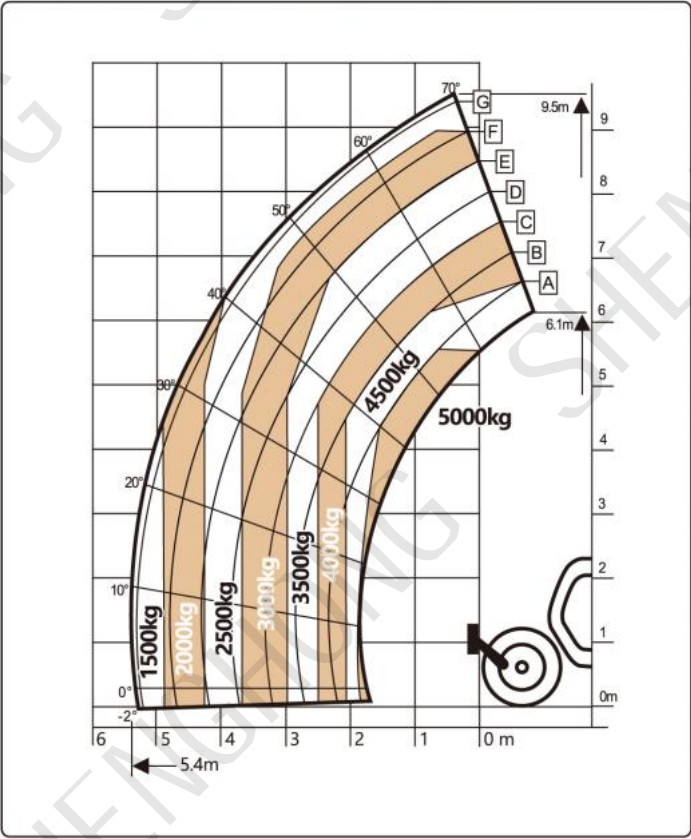
## ENGINE OPTION

Engine		Cummins 4BT3.9-C125	Cummins QSB3.9-C125	Cummins QSF3.8	Perkins	YUCHAI	YUNNEI
Rated power	kw	93	93	93	74.5	92KW	88.3KW
Engine emission standard		STAGE II	EURO III	EPA4	EPA4/EURO V	EURO V	EURO V

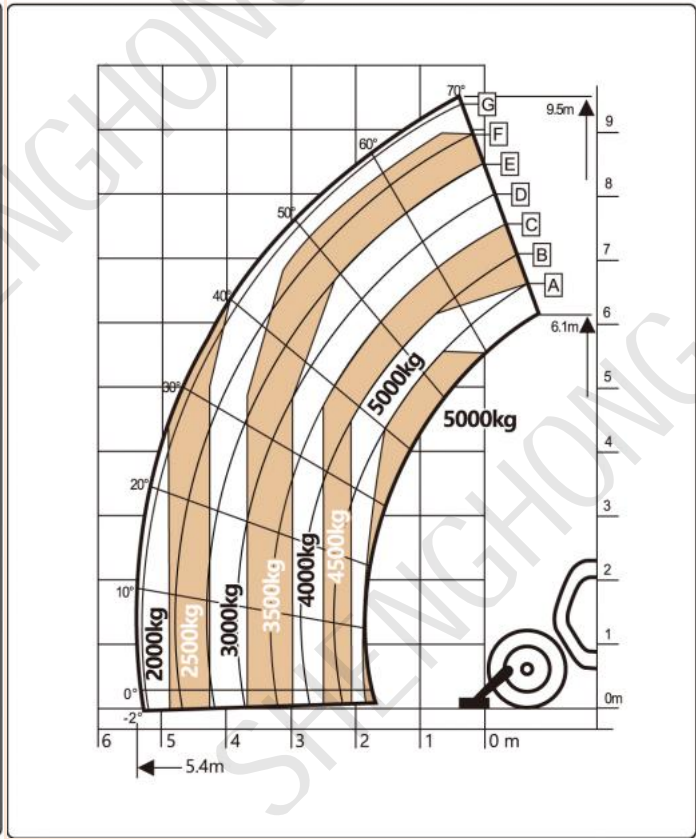
## Product specification



Machine on tyres with forks - with levelling device Metric



Machine on lowered stabilisers with forks Metric



## Attachment



Quick Hitch



Pallet Fork



Hydraulic pallet fork



360° Grapple



Hammer



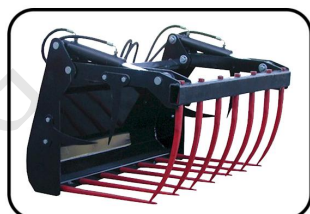
Auger



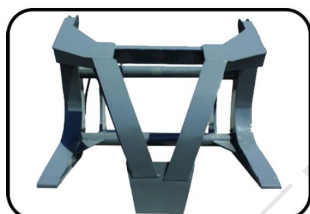
4 in 1 Bucket



6 in 1 Bucket



Grass Fork



Wood Fork 1



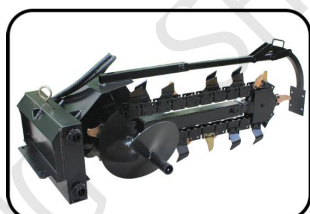
Wood Fork 2



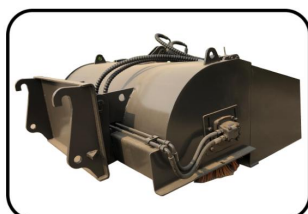
Wood Fork 3



Snow Blade



Trencher



Open Sweeper



Closed Sweeper



Dustpan Bucket



V Blade



Platform



Snow Blower



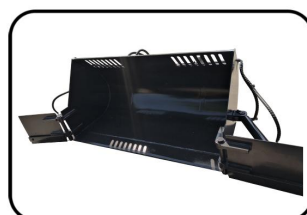
Lawn Mower



Hook



Grass Clip



Snow bucket with wings